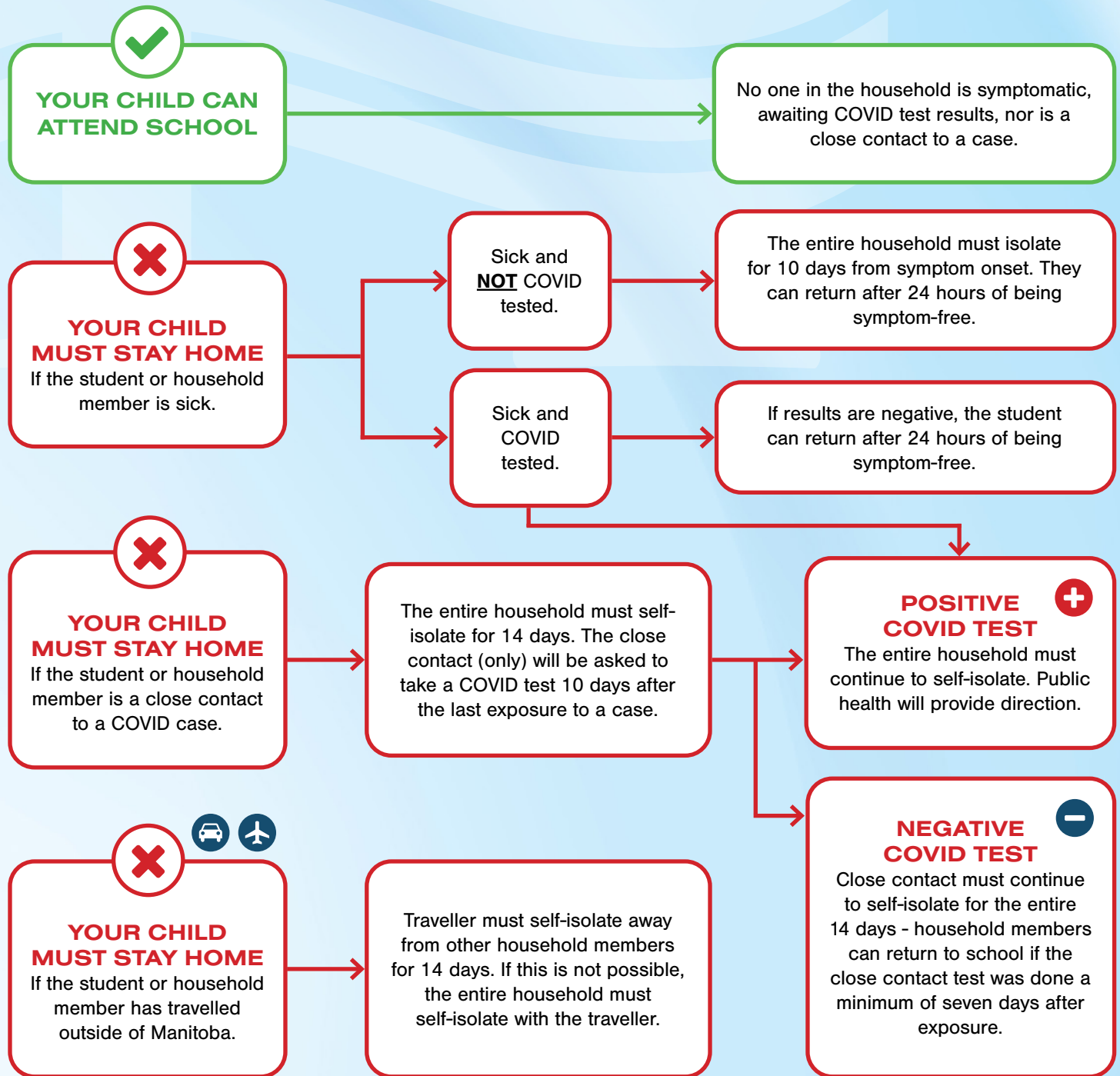


WHEN CAN STUDENTS ATTEND SCHOOL?

WHAT YOU NEED TO KNOW



COVID-19 Variants of Concern (VOC)

If the close contact is linked to a variant of concern case and the close contact chooses not to be tested, the close contact must self-isolate for 14 days, followed by an additional 10 days, for a total of 24 days. The rest of the household must also self-isolate for the entire 24 days.

